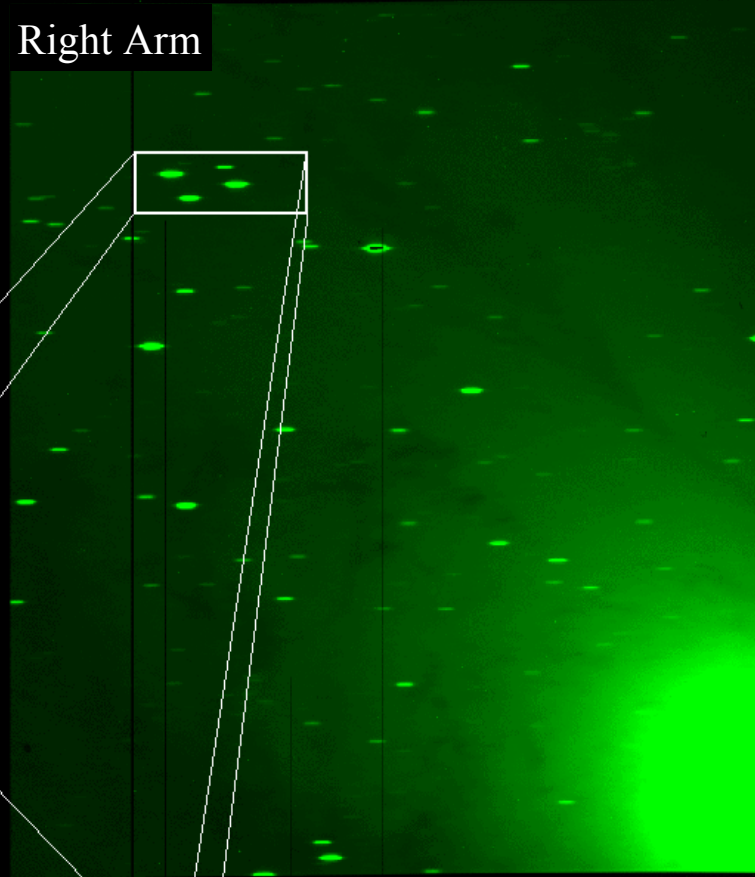
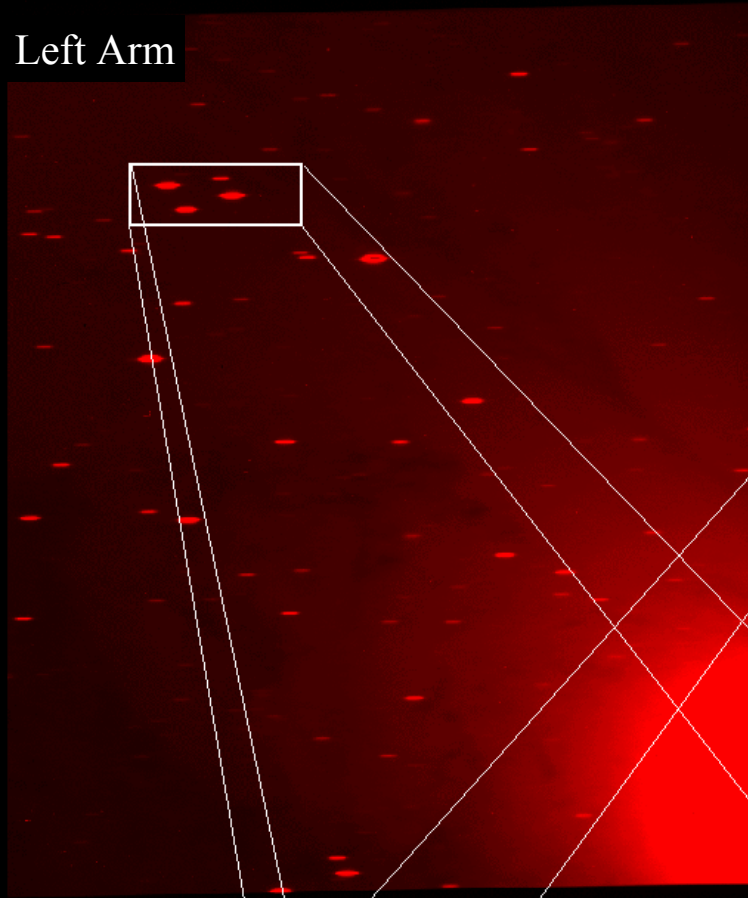


Commissioning Data: M31 Test Field

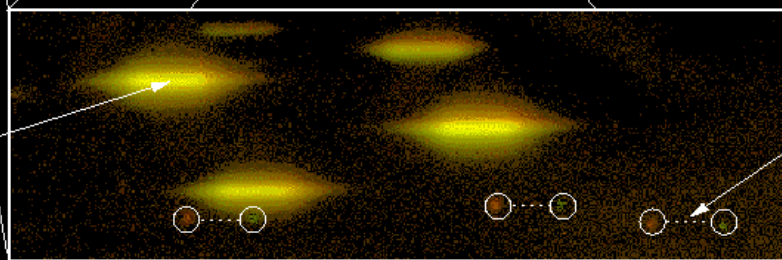
Left Arm

Right Arm

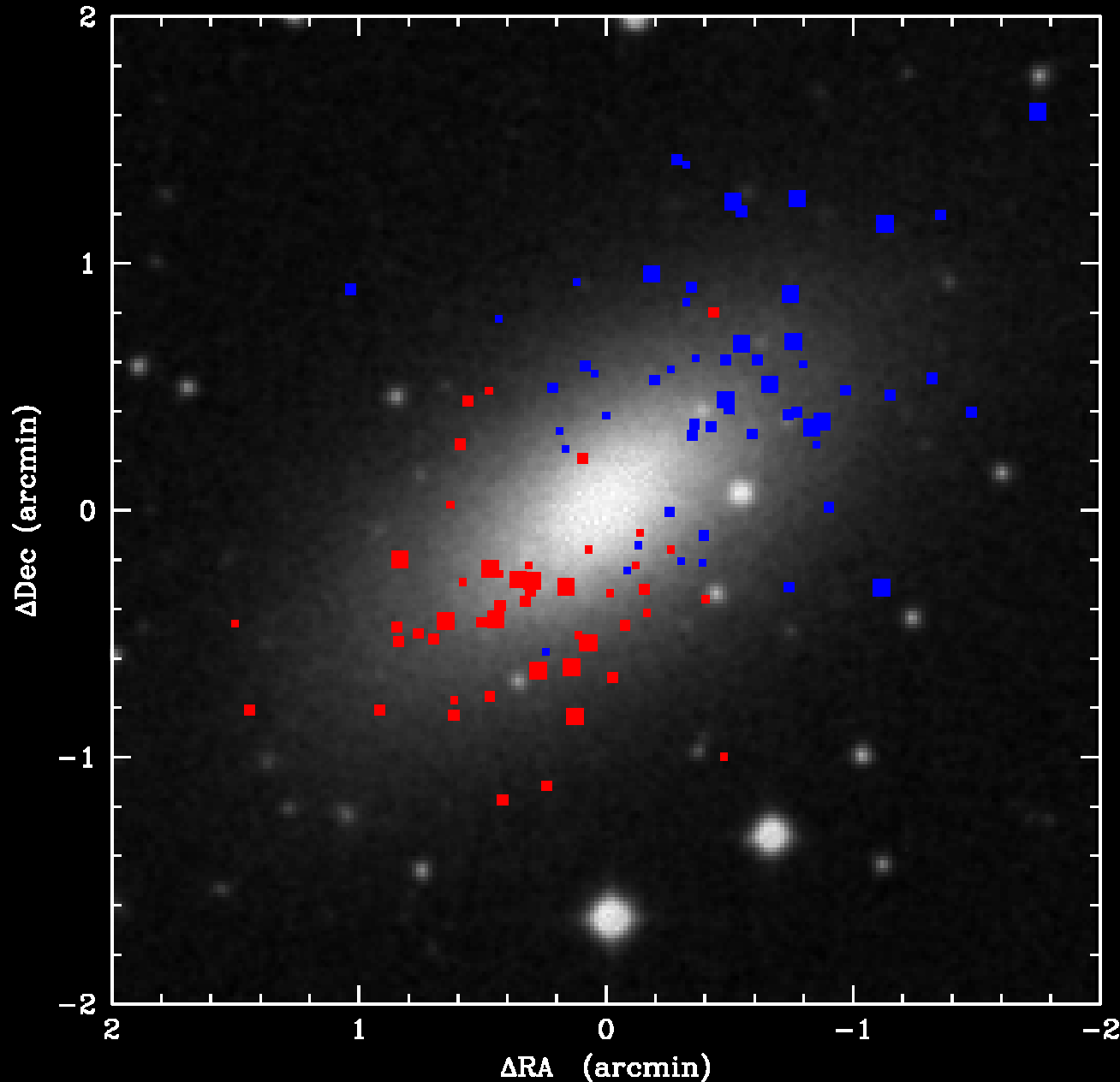


star

Planetary Nebula



Preliminary Science Data: The S0 Galaxy NGC 7457



Planetary nebula kinematic data superimposed on an optical image. Each point lies at the location of a PN detected by PN.S. The size of the point indicates the magnitude of the PN's velocity relative to the galaxy's systemic velocity, while the colour indicates whether it is approaching or receding.

